



Logan Artists Association Newsletter March 2012

General Meetings are held the 1st Saturday of each Month excluding January.
Next meeting is 3 March 10am.

**Art
+
Friendship**

Logan Artists Association Inc

PO Box 378
Browns Plains
QLD 4118

Art & Pottery Studios
27 Coral St Loganlea

ALL ENQUIRIES
Ph 0400 165 767

www.loganartists.com

President

Karin Hill
president@loganartists.com

Vice President

Robyn Pell
newsletter@loganartists.com

Secretary

Vikki Kindermann
secretary@loganartists.com

Acting Treasurer

Robyn Pell
treasurer@loganartists.com

Classes

Di Flack
classes@loganartists.com

Newsletter

Robyn Pell
newsletter@loganartists.com

Patron

Desley Scott MP
State Member
for Woodridge

"A place for all Artists"

President's Message...

Karin

This month marks the sixth anniversary of Logan Artists being at 27 Coral Street Loganlea. The number six has a wide range of significant meanings. For the mystics, six is a symbol of completeness, a symbol of beauty and high ideals. For Christians, six is a number perfect representing the creation of all things in six days. In astrology, six is a symbol of Venus, the goddess of love. For gamblers, six is a symbol of luck being the highest number of the dice. For the psychic, the sixth sense" refers to extra sensory perception (ESP) when meaning hunch or instinct. And the list goes on, including interesting facts for music, insects, Braille system, atomic chemistry, mathematics and a wide range of significance in history and mythology

But what else does this anniversary symbolise for Logan Artists Association? I suggest it means the introduction of many new and wonderful features – a new LAA telephone number, a new LAA raku kiln and plans for our new LAA gallery space. In the February members meeting, we voted on the exhibition theme for the LAA annual exhibition and the successful theme was "Focus on Logan".

Our March members meeting will celebrate our sixth anniversary with six door prizes to give away. We will also welcome a special guest speaker, Sascha Mason, from the Ipswich Art Society. Sascha will talk to us about the newly renovated Ipswich Courthouse Gallery and the special exhibition deals on offer.

I look forward to sharing this special members meeting with you and the range of activities during March.

Thought for the month: *"Life is a lot like jazz... it's best when you improvise."* George Gershwin

RAKU Workshop

A rainy day does not keep the keen potters away from the LAA pottery studio.

Our Raku workshop on the 25th of February was a great success. The students listened intently as Ray described the process they would need to take to achieve Raku fired clay ware.

Everyone made some nice clay pieces on the day ready to be bisque fired in preparation for them to use on our very first Raku firing day on the 24th of March.

The rain on the day did not stop the fourteen people enjoying the afternoon workshop; some were regular students from our Monday and Thursday classes and some were new comers to the pottery studio.

We offer a very big welcome to Ann and Melissa who decided to join LAA and become new members on the day.

Di



From the Pottery Studio



Greetings All,

Much to talk about in this newsletter. By the time this goes to print we will have conducted a RAKU introduction Workshop. The R1 kiln has been completed and we are looking forward to the initial firing. Some kiln gods have already been made and will go in the first firing.



A designated area at the back of the pottery studio is a great asset for the LAA and the potters the Logan City Council is further improving this area with the construction of a concrete Path and a concrete slab. This generous gesture by the Council will make this particular RAKU FIRING area as good as it gets, it's greatly appreciated.

With the addition of the RAKU kiln the spectrum of expression has been greatly enhanced. The pottery section of the LAA is very well equipped and now just about all areas of artistic pottery can be undertaken. There has been a lot of support for classes and workshops, and we continue to grow and build a solid base. Of course all are welcome and we look forward to more membership.

This year will be an exciting time, all decorative applications and techniques will be explored. We are looking forward to many happy firings. Later on this year, the actual dates are yet to be decided, we will participate in open Raku days where you can bring along all your friends. All interested will be able to purchase a piece of Raku pottery, glaze and decorate it then have it fired (at a minimal price). The process, which is most enjoyable and rapid, will produce the finished pot in approximately 30 minutes or so. On these open days we usually run a sausage sizzle in parallel with the pottery firing, so not do we make some beautiful pottery but we do it with a full stomach. Over the years I have conducted many firings and on all occasions all present have had a good day out. So I look forward with anticipation to the first open day. All proceeds will go to the LAA, so keep your eyes peeled for the dates.

Monday classes have been well attended with all members undertaking individual projects, decorating and originating their own pallet of glaze colors.

Social days are also well attended; they are great for interaction with your peers and to finish off little jobs that have originated in the classes.

We are still looking for any metal rubbish bin with lids or 20 liter tins or buckets. Also anyone who has any spare horse hair, (we use it for Raku firings) then we would appreciate same.

This year we also hope to undertake Saggar and Barrel firings, these techniques will utilize the Raku kiln and we are looking forward with anticipating to those events.

Well that's about all for this report, I hope the heat dissipates soon and if required we will keep warm around a kiln somewhere.

So come along & bring your friends, join in activities at the LAA and participate. If you wish to contact me, please phone (any time) on 0418 6732404 or 55467398. Thanks for your time.

Ray.

Ron Richardson

Ron Richardson, a long term LAA member and regular at the LAA Social Art Group passed away peacefully on Sunday 19 February after battling cancer for sixteen months. He enjoyed painting with the Tuesday Social Art Group and came along even when not feeling the best. We will miss his happy nature and ready smile.

Members and friends of Logan Artists Association and all his friends from the Tuesday group send their sincere condolences to his wife Morag and their family. Thanks to Di Flack for this photo of Ron with Noel Rogers taken at a Tuesday Art Social Group during 2011.



Logan Art Gallery



Logan Art Gallery is currently showing two fascinating exhibitions. "Natural Patterns" by local artist Mark Davey displays 31 colourful paintings. The heavily textured, acrylic on canvas artworks reflect Mark's current interest in trees and the fascinating patterns seen when you really look, such as marked trunks of old trees, cast shadows by trees and foliage shapes against the blue Queensland sky. This exhibition also depicts areas of interest in Logan. Mt Cotton waterlilies and views of the Logan River reveals Mark's keen appreciation of the beauty we have in our own neighbourhood.



In Gallery Two & Three, the very popular International Wildlife in Art 2012 exhibition displays beautiful work by 25 members of the Queensland Wildlife Artists Society Inc. In line with the QWASI objective to engage and educate on environmental protection and sustainability, this exhibition depicts both Australian and overseas wildlife in endearing poses. The fact that many of these animals and birds are under threat of extinction is frightening. Pastels, oils, acrylics, charcoal, coloured pencils, scratchboard, porcelain and

bronze sculptures was used by these talented artists to create delightful images of koalas, possums, gorillas, elephants, bears, birds cheetahs, deer and many other wonderful creatures.

Congratulations to these talented artists, many of whom we are very pleased to acknowledge as members of Logan Artists Association.



Michele Musgrave Echidna



Sandra Temple: Going... going... gone I & II



Judith Edwards-White: A Mothers Love



Gail Higgins: Palm Berry Feast



Judith Edwards-White: Resting Place

LAG Workshop Exhibition



Karin Hill - Mono Print Collage on Paper

Logan Art Gallery are currently running an exhibition of art works completely in their workshop program. These are a few images of LAA member pieces on display.



Vikki Kindermann and Robyn Pell
Screen prints on Cotton

Seascapes Workshop

Well our first workshop for 2012 got off to a great start. The Seascapes workshop with Brian Cook was held on Saturday the 18th of February and was well received by all who attended, the studio was buzzing with expectation.

Brian with his usual wit, flair and special style of painting had every one entertained and engrossed the entire morning. His ability to create something wonderful in a short space of time just out of his head amazed the class.

Brian was always ready to help anyone that asked, he would guide you as you went telling you what paints you needed to use, and then showing you what to do on your board. He set up a board for himself in front of the class demonstrating what to do along the way. You could hear a pin drop it was so quiet at times while the class copied Brian's instructions.

Everyone completed a seascape painting and then Brian placed them one by one in a beautiful frame he had bought along for the day. Everyone stood back amazed at how wonderful each painting looked as they were shown by Brian.

The class then watched more of Brian's technique while he painted three more water scenes that were all so very different, one on a large board and two smaller ones. When he had finished he said he would give them away so to be fair everyone put their names in a basket and the winner Ray Outteridge was drawn out so he got to take home the big painting.

Nine attended the workshop with four new comers to LAA. A very big welcome to Rhonda and Deborah, who decided to join and become new members on the day, they each got to take home one of the other small painting that Brian had done.

Thanks Brian for you generous spirit.

Di Flack



Under new management since 2007

- THE MOST COMPREHENSIVE RANGE of fine art supplies (including Art Spectrum, Chroma, Winsor & Newton, Schmincke, Canson, Staedtler, Artline, Faber-Castell, Micador, Fredrix, Derwent, Conte, Carravaggio, Weber, Caran D'Ache)
- The biggest range of Mont Marte products in Queensland
- A reputation for having the FAIREST PRICES
- A loyalty programme with achievable rewards
- Extra discounts for art educators, artworkers alliance and flying arts members
- Unique ART KITCHEN, a no obligation materials testing area.
- Artist drop-in centre, with artists working in store - FREE
- Regular FREE ART DEMOS
- ART BOOKSHOP in store and online.
- Custom CANVAS STRETCHING service
- Circle Gallery above



274 Montague Road West End, Q 4101
Ph: (07) 38461330
Fax (07) 38463330
Email: westend@artshed.com.au

OPEN
7
DAYS

www.artshedbrisbane.com.au

10% Discount for Logan Artists Members

Free Website Artists Profile

If you are a member and would like your profile on the new LAA website gallery please email Robyn with your details at newsletter@loganartists.com with your interest.

This is free to all LAA members and can be linked to your own website.

Forward Planning For 2012 LAA Calendar

LAA members are invited to submit ideas for special workshops or events for consideration in the LAA 2012 Events Calendar.

Please email your ideas to newsletter@loganartists.com or write them and place in suggestion box at the studio.



Product of the Month from

“The Art Shed”

Wooden Storage Box (MEA0016)

Made from finest quality Beech wood. Dovetail joints on box and tray. Smooth lacquered finish. Adjustable compartments in the base. Easy lift-out divided brush tray. Leather carry handle, brass hinges and latch. Size - 40cm L x 20cm W x 15cm

Newsletter Articles

Please submit any stories or images you may like to have published. We are always looking for interesting articles or stories about what our members may have done or images of the work they are creating.

Send to newsletter@loganartists.com

For Sale & Wanted (email your ads to newsletter@loganartists.com)

Wanted for the Pottery Studio.

20 or 10 litre plastic buckets with lids. To be used for glazes and materials.

Metal Rubbish bins with lids, it doesn't matter what condition they are in.

Also any old pottery Kiln shelves, white solid bricks (clinkers) for kiln use.

We are also looking for a large glass jar (about 3 to 4 liters).

If you can help out with this request it would be greatly appreciated. Thanks Ray. Ph 0418673404

Logan Library Book Sale

Thank you to those members that visited and advertised our turn at the Logan Central Library Book shop. The day was a great success with new member interest, more books for our LAA library and some extra funds.

New Art Social Group Starting Soon

A new night time social group is starting in the next month for all those artists that work and can't attend during the daytime. Please call Robyn on 0417 719 745 if you would like to attend.

Cost will be \$5 for members and \$10 for non-members.

First night free for all non-members visiting for the first time!

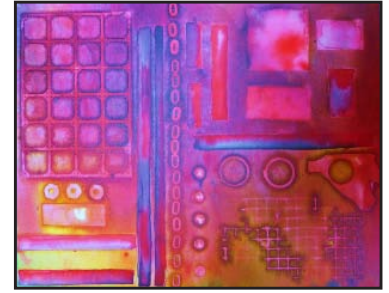
“As the sun colours flowers, so does art colour life.” ~John Lubbock

Workshops at LAA

Heliotropic - What The???

Tutor: Debaran Wright

Saturday March 24th come and have fun with a very different vibrant medium. This paint is affected by sunlight! Bring or find objects and create a 'masterpiece'. Participants must bring two canvases (approx. 50x50 cm.) and whatever bits and pieces they would like to work with (these must be able to lie flat). Other objects for possible inclusion will also be available. You do not need to be an artistic genius to enjoy this workshop – open to all levels of capability – so bring a friend!!



Cost: \$35 Members \$40 non members plus materials

Date: Saturday 24th March

Time: 9.30 - 12.30

Location: Logan Artists Association Studio, 27 Coral Street, Loganlea.

Please feel free to call Deb on 0421 409 069 or to contact me at debaran@bigpond.com

Raku Firing Workshop

Tutor: Ray Outteridge



Firing -A further workshop on Raku firing will take place on the 31st March. This will be of six hours duration (10am to 4pm) & will cover all aspects of the firing process. All previously made pieces will be glazed & fired. The kiln will be fired six or seven times during the day.

Cost: Costs for the firing day will be Members \$40 & non members \$50. Plus glaze costs (minimal)

Date: Saturday 31st March.

Time: 10am to 4pm

Location: Logan Artists Association Studio, 27 Coral Street, Loganlea.

Book with Ray 0418673404 or Di Flack on 0400165 767 or rayoutteridge@tadaust.org.au



Triple Fun Workshop - Polymer Clay

Stained Glass Pendant, Captured Curiosity, Window Heart Pendant

Tutor - Christi Friesen -(Guest International Artist - One off Workshop)

All skill levels welcome! All Supplies Provided For This Workshop!

In this workshop we will create three fun projects! These projects incorporate sculptural techniques, use of mixed media accents and resin. Design and composition, creativity, color mixing, sculptural techniques and incorporating mixed media accents in polymer clay are all areas that we will cover. Don't worry if you've never done anything like this before - the projects are broken down into simple steps. And if you're already an accomplished artist, you'll love exploring how polymer can expand your artistic vision. All materials will be supplied.

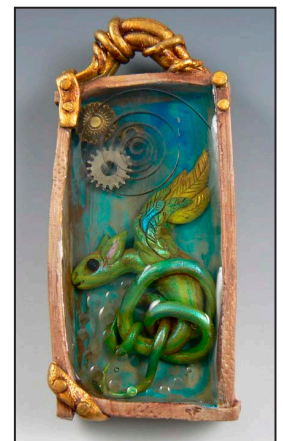


For more information and bookings - email: christi@cforiginals.com or phone Robyn on 0417 719 745

Cost: \$70USD This workshop is open to all skill levels.

Date: Thursday 15th March **Time:** 2pm to 6pm

Location: Logan Artists Association Studio, 27 Coral Street, Loganlea.



Bookings only by Christi's website www.cforiginals.net/ follow the links to workshops.

Workshops at LAA cont'd

Ink Pen and Wash Workshop - a particularly vibrant medium

Module 2 - Tutor: Deb Wright

This workshop is a follow on from the introductory workshop held last year. It is not imperative that you attended the previous program.

It is intended that this workshop focus on ink and washes; working only in ink; working only in black pen; laying down background colour; the use of resistant medium; mixing colours; working with the 'ink wash' concept of 'less is more'; special effects; etc.

There will be a little preparation required – 4 pieces of selected ink drawings will be required to be drawn prior to the workshop. This will reduce the time taken in drawing or copying these drawings. They will be used for 'ink wash'. Copies will be provided 2 weeks prior to the workshop so that you have enough time to use the light box in the studio or use a window pane to copy these onto paper that will be provided or perhaps you would prefer to astound and draw free hand??

Copies of ink drawings will be provided together with suitable paper

Paper and ink will be provided

Please bring at least one medium point permanent black felt pen

Cost: TBA

Date: Saturday 14th April

Time: 1pm to 4pm

Location: Logan Artists Association Studio, 27 Coral Street, Loganlea.

Please feel free to call Deb on 0421 409 069 or at debaran@bigpond.com



Shellac, Aluminium + Bitumen Workshop

Tutor: Deb Wright

Working with these 3 products creates magic. The Shellac being alcohol based and the Bitumen being oil based react spectacularly with each other. The addition of Aluminium foil creates the most unusual end results. This workshop investigates new areas of technique and an 'abstract' end result that is totally different to any other medium. The possible inclusion of oil paints allows for different colouring but the reactions are still exciting and varied.

In view of the layering and drying that is needed between layers this workshop will take a full day.

Please bring your own lunch, wear an apron or old clothes and bring 2 Canvases minimum of 30x30cm (please prepare with 2 coats of white gesso)

Aluminium, Bitumen, Oil paints, Shellac, Methylated spirits, Brushes, Turpentine and various spray bottles, etc. will all be provided.



Cost: TBA

Date: Saturday 21st July

Time: 9am to 4pm

Location: Logan Artists Association Studio, 27 Coral Street, Loganlea.

Please feel free to call Deb on 0421 409 069 or at debaran@bigpond.com

Classes at LAA

Monday Afternoon Pottery Class

Pottery Class is conducted at the L.A.A. pottery studio, 12.30pm to 3.30pm.

All aspects of Studio Pottery will be undertaken. Cost will be \$25 for members and \$30 for non members.

For further information please ring Ray on 0418673404 or 55467398 any time or rayouteridge@tadaust.org.au

Monday Night Pottery Class - *Starting soon sign up now!*

A Evening Pottery Class will be conducted at the L.A.A. pottery studio commencing shortly, 6pm to 9pm. At present we have two participants but we require a minimum of seven students to make the class viable. So ask your friends and form a group. As soon as we have seven we will start.

All aspects of Studio Pottery will be undertaken. Cost will be \$25 for members and \$30 for non members.

For further information please ring Ray on 0418673404 or 55467398 any time or rayouteridge@tadaust.org.au

Wednesday Art Class with Deb

Wednesday class is a collective of artists using various mediums. Participants work at their own pace in their chosen medium of water colour, acrylics, drawing or any alternative combination or other medium. It is the intention that tuition is individualised to suit each participant during their art practice. Subject matter varies from total realism to textured abstract. This group is suitable for beginners or advanced artists who wish to experiment in new areas or hone their skills. It is an informal and friendly group of like minded participants who are encouraging of each other's achievements.

Time: 9.30-12.30 Wednesday mornings. Please feel free to call Deb on 0421 409 069 or at debaran@bigpond.com

Social Groups at LAA

Social groups are an opportunity for artists to get together with other like minded artists and enjoy each others company and a chance to work on your latest project.

These are untutored groups and no materials are supplied. Bring your own project and materials.

Cost will be \$5 for members and \$10 for non members (tea and coffee supplied)

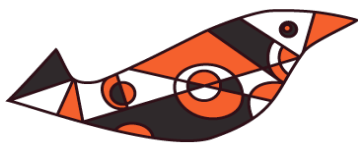
Art Studio Social Groups

Time: 9.30am-2pm Tuesday Mornings

Time: 6pm - 9pm Tuesday Nights fortnightly starting soon. Call Robyn 0417 719 745 to join.

Pottery Studio Social Group

Time: 9.30am-12.30pm Thursday Mornings



LOGAN ARTISTS ASSOCIATION

March – June 2012

Art + Friendship

PO Box 378 Browns Plains Qld 4118 ABN 82 342 259 288

All enquiries 0400 165 767 www.loganartists.com

REGULAR CLASSES / SOCIAL GROUPS IN ART & POTTERY STUDIOS

REGULAR CLASSES IN ART STUDIO

Mon	Tue	Wed	Thu	Fri	Sat
Oils with Brian 9:30-12:30pm (fortnightly)	Social Art Group 9:30-2pm	Art Class with Deb 9:30-12:30pm	Art class with Suzanne 9:30-12:30pm Evening Art with Terry 6-8pm (fortnight)	Art class with Mako 9:30-12:30pm	

REGULAR CLASSES IN POTTERY STUDIO

Mon	Tue	Wed	Thu	Fri	Sat
Pottery class with Ray 12:30-3:30pm			Social Pottery Group 9:30-12:30pm		

SPECIAL WORKSHOPS AND EVENTS:

March 2012

Sat 3/3	10am-12noon	LAA Members meeting with Sascha Mason (Ipswich Art Society)
Thur 15/3	2pm – 6pm	Polymer Clay Workshop with Christi Friesen (International Artist)
* Sat 24/3	9:30-12:30pm	Heliotropic workshop with Deb Wright
Sat 31/3	10am-4pm	LAA Raku Firing Workshop

April 2012

Sat 14/4	10am-12noon	LAA Members meeting with Margaret Kirman
* Sat 14/4*	1pm-4pm	Ink, Pen & Wash Workshop Module 2 with Deb Wright

May 2012

Sat 5/5	10am-12noon	LAA Members meeting with John Coleman
Sat 12/5	9am-2pm	Mayes in May – LAA stall and children's activities
Sat 19/5	9am-2pm	Kalidescope – LAA stall & art / pottery activities

June 2012

Sat 2/6	10am-12noon	LAA Members meeting
* Sat 9/6	10am-4pm	Special pottery Demonstration/Workshop: "Tea Pot Design --The Function -The Aesthetic - The Vessel"
Mon 25-29/6		KRANK (details to be confirmed)

All activities are subject to change.

* Minimum numbers required for workshops to proceed - if interested, please register as early as possible.

To confirm details and make bookings, phone Di on 0400 165 767

SEE WEBSITE FOR MORE DETAILS www.loganartists.com